



12 Westbrooke | | Worthing | BN11 1RE





12 Westbrooke | | Worthing | BN11 1RE

Offers In Excess Of £899,950

*** OFFERS IN EXCESS OF £899,950 ***

WARWICK BAKER ESTATE AGENTS IS DELIGHTED TO OFFER YOU THE RARE OPPORTUNITY TO PURCHASE A STUNNING AND ELEGANT DETACHED FREEHOLD HOUSE IN WESTBROOKE, WORTHING (RIGHT IN THE TOWN CENTRE).

JUST MINUTES FROM THE SEAFRONT AND THE TRAIN STATION, AND IN A QUIET ONE-WAY ROAD, THIS SUBSTANTIAL PROPERTY HAS SPACIOUS ACCOMMODATION SPREAD OVER THREE FLOORS.

ON THE GROUND FLOOR YOU ARE WELCOMED BY A LARGE HALLWAY, 15'1 X 11'11 LEADING OFF TO A WESTERLY ASPECT LIVING ROOM, 15'9 X 11'11 SOUTHERLY ASPECT DINING ROOM, BRIGHT 21' X 12 TRIPLE ASPECT KITCHEN BREAKFAST ROOM AND UTILITY ROOM.

- DETACHED FREEHOLD EDWARDIAN PROPERTY
- WORTHING TOWN CENTRE
- LARGE SURROUNDING PRIVATE GARDEN
- PRIVATE DRIVE AND GARAGE
- FOUR BEDROOMS (THREE DOUBLE)
- ON A QUIET ONE-WAY ROAD
- NEAR SEASIDE AND TRAIN STATION
- THREE FLOORS
- TWO PATIOS
- SYMPATHETIC INTERIOR RESTORATION



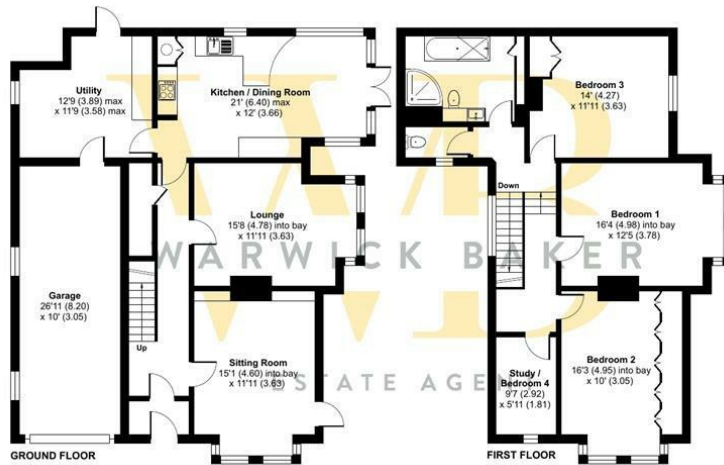
Westbrooke, Worthing, BN11

Approximate Area = 1794 sq ft / 166.6 sq m

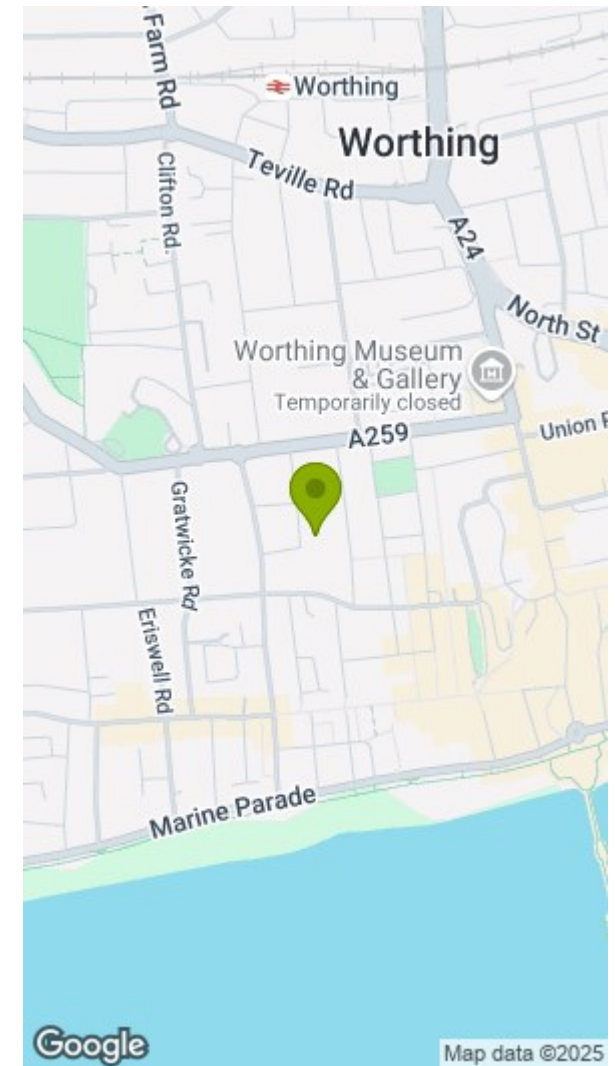
Garage = 264 sq ft / 24.5 sq m

Total = 2058 sq ft / 191.1 sq m

For identification only - Not to scale



Floor plan produced in accordance with RICS Property Measurement 2nd Edition, Incorporating International Property Measurement Standards (IPMS2 Residential). © richcom 2025. Produced for Warwick Baker Estate Agent Ltd. REF: 1230225



Disclaimer

* These particulars are intended to give a fair and substantially correct overall description for the guidance of intending purchasers and do not constitute an offer or part of a contract. Prospective purchasers and/or lessees ought to seek their own independent professional advice.

* All descriptions, dimensions, areas, references to condition and necessary permissions for use and occupation and other details are given in good faith and are believed to be correct, but any intending purchasers should not rely on them as statements or representations of fact, but must satisfy themselves by inspection or otherwise as to the correctness of each of them.

* All measurements are approximate

